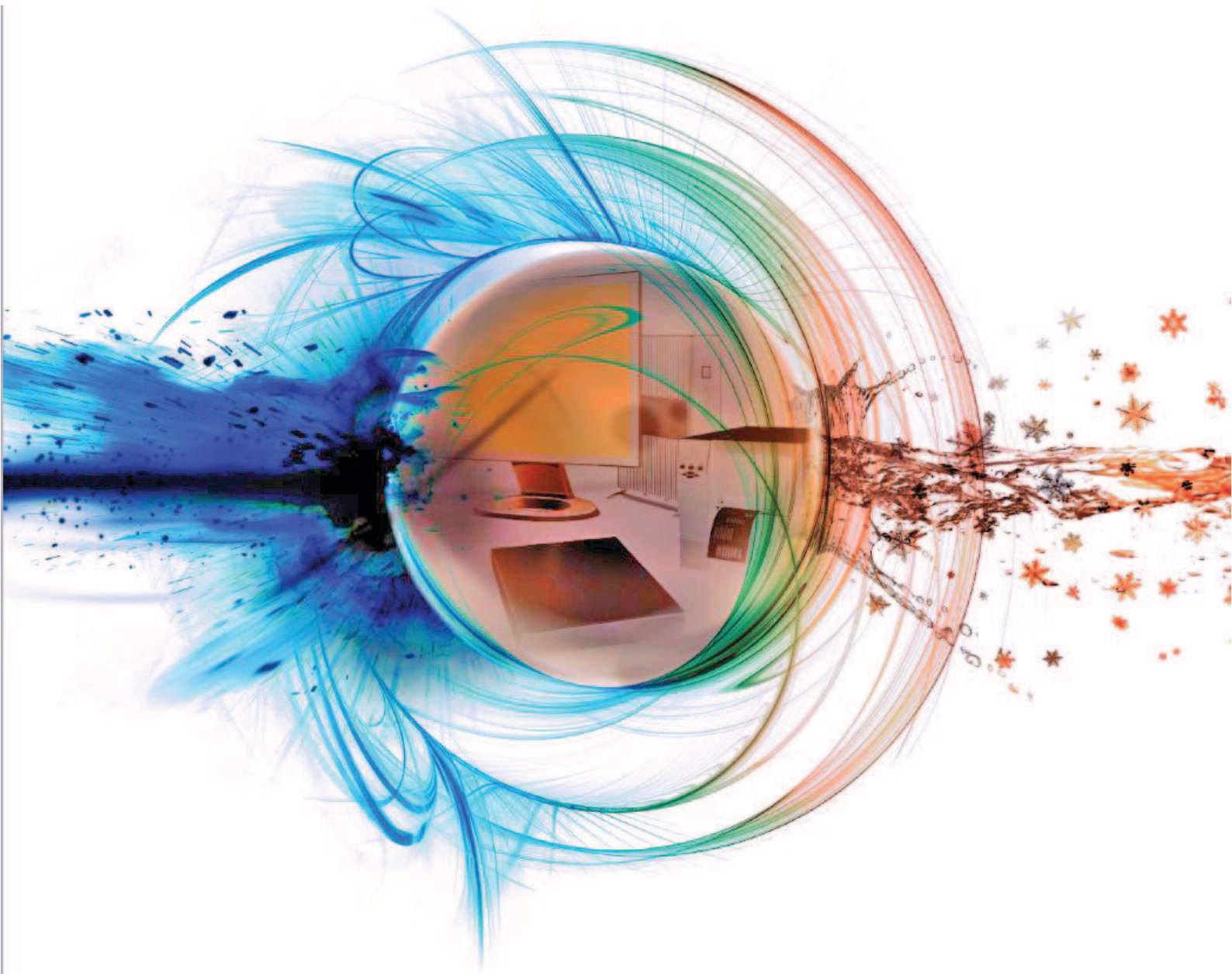


Moovi

Mobile, Autonomous, Modular, Ergonomic, Innovative...

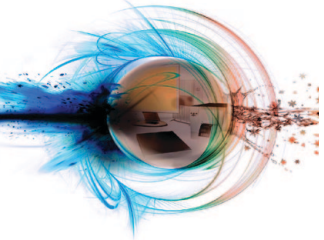


Moovi, mobility for healthcare services



REALISATIONS

Designer & Manufacturer
Fixed and mobile workstations



Designer & Manufacturer

Moovi

Healthcare services computer workstation trolley
Designed to house a computer workstation

Computer fixings used to render the trolley secure
 Integrated layout reduces the risk of damage, loss or theft.

Characteristics:

- Structure in 15/10 steel, comprising a screen mounting plate fitted to a stem, in turn attached to a base.

Upper section:

- Movement: Screen & keyboard shelf can be simultaneously adjusted vertically using the centrally-mounted handle and release pin. Four height settings available;
- Screen mounting plate designed for LCD monitors;
- Worktop designed for a keyboard, mouse and barcode reader;
- Centrally-mounted handle integrated into the worktop.

Stem:

- Tube steel with a rectangular cross section;
- Connectivity: cable run within the stem itself;
- Securely fixed to the base;
- Designed to be fitted with up to six optional storage fittings, attached to a support frame;
- Optionally: Lithium battery compartment behind the stem.

Lower section:

- Base fitted with four rotating casters, two of which are fitted with locking devices;
- Protected by PU foam trim to prevent impact damage.

Also available: MOOVICARE version - attaches to a standard medical trolley



MOOVI DIMENSIONS (mm):

External dimensions W 610 x D 771 x H 1608

Advantages:

ERGONOMIC

MODULAR

UPGRADEABLE

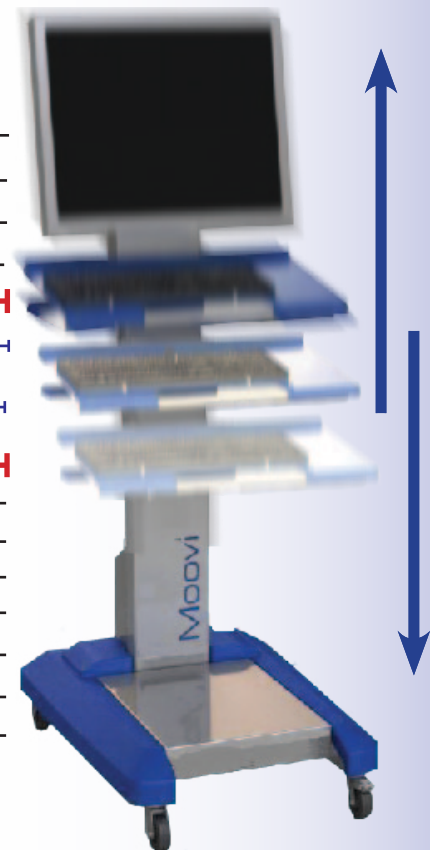
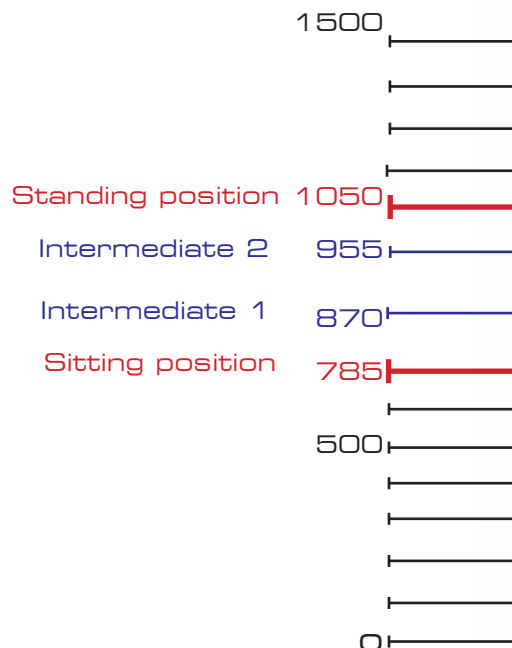
EASY TO HANDLE

AUTONOMOUS

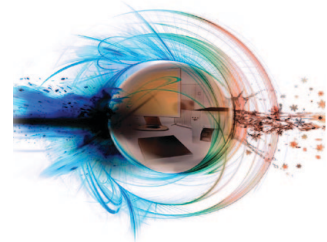
SECURE

Workstation ergonomics

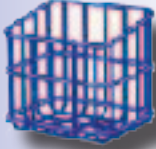
4 positions



Fixed and mobile workstations



OPTIONS... Optional fittings are attached to the mounting frame on the stem. This frame can accept up to six options.



Basket
Used to store office supplies, medical equipment, etc.



Document holder
To hold and organise current dossiers



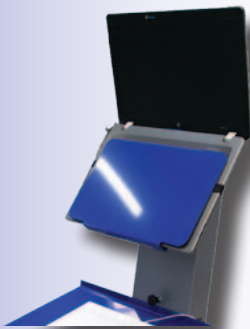
Lockable drawer
Storage of documents, medical equipment, etc.



Storage tray
Document storage or for a bracelet/label printer



On request
The above options can be mixed-and-matched to create your own configuration.



OPTION: Laptop computer support
Used to restrict the development of bacteria through contact with the keyboard.

ENERGY OPTION: Lithium battery

The battery compartment is fitted with a voltage indicator giving constant information as to the remaining charge. The MOOVI can also be used with the mains.

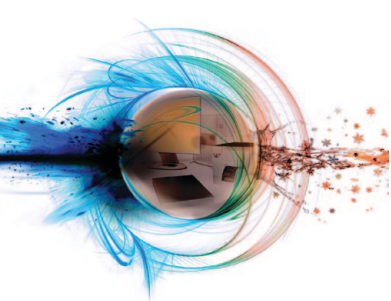
There are four possible configurations:

- 20 Ah: 12V-250W with two 12V outputs and outputs cards in option: 12V/24VDC- 3A or 12V/19VDC- 4A or 12/5VDC- 7A.
- 40 Ah: 12V-500W with two 12V outputs and outputs cards in option: 12V/24VDC- 3A or 12V/19VDC- 4A or 12/5VDC- 7A.
- 10 Ah: 24V-250W with two 24V outputs and outputs cards in option: 24V/12VDC- 6A or 24V/5VDC- 7A.
- 20 Ah: 24V-500W with two 24V outputs and outputs cards in option: 24V/12VDC- 6A or 24V/5VDC- 7A.



Designed & manufactured in France





TECHNICAL CHARACTERISTICS



MOOVI	Components		Dimensions (in mm)			Fixings		
Upper Section								
Screen	• Monitor mounting plate		VESA 100			• 4 screws, fitted to the rear of the monitor mounting plate		
Work surface	• 2 mm steel plate, laser cut then folded • Finish: Epoxy paint (blue)		Length 610 x Width 325			• Screw-fit onto the vertical stem		
Handle	• Painted steel tubing		Diameter 20			• Handle screwed on to the bottom of the work surface		
<p>> Movement: Simultaneous vertical movement of all three elements using a hydraulic cylinder in the vertical stem giving the upper section four separate working positions.</p>								
Vertical Stem	• Rectangular metal tubing painted with grey epoxy		L 195 x D 75 x H 1340			• Assembly mechanically-welded onto a plate attached to the base		
Lower Section								
Base	• 2.5 mm folded steel plate • Finish: Epoxy paint (grey) • Protective trim around the base - Polyurethane foam • Space for a battery compartment		L 610 x D 771 x H 165			• Assembly bolted onto the vertical stem • Base fixings - nuts and bolts • Fixed to both vertical stem and base		
Wheels	• Four rotating casters, two of which are fitted with locking devices		Diameter 75			• Fixed to the underside of the base		
Battery compartment configurations	Components	Batteries	Output voltage	Options: output cards	Dimensions (in mm)	Weight	Example	Autonomy
> 20 Ah	<ul style="list-style-type: none"> • Cabinet - Lithium Li Fe Po4 • Voltage indicator • Disconnector switch • IEC-compatible socket 	12V - 250 W	2x12	<ul style="list-style-type: none"> •12V/ 24 VDC - 3A •12V/ 19 VDC - 4A •12V/ 5 VDC - 7A 	L160 x D125 x H365	7,6 kg	Supplies a computer workstation + lightweight client	8 hr
> 40 Ah		12V - 500W	2x12					
> 10 Ah		24V - 250W	2x24	•24V/ 12 VDC - 6A				
> 20 Ah		24V - 500W	2x24	•24V/ 5 VDC - 7A				