



# Designer Manufacturer

## TGC

Protective enclosure for large format thermal printers

### Characteristics:

- The enclosure body consists of a single thermoplastic unit so that the front, side and rear are part of the same structure;
- 10 mm thick composite walls, dyed in the mass, to protect and seal the enclosure;
- Connections: 80 mm diameter cable port;

VENTILATION: The ventilation and suction systems are used to:

- Suck, filter and pressurise the inner volume;
- Discharge air when opening the enclosure, which creates a barrier preventing dust from entering.

### Left side:

- Inlet grille equipped with filter to trap the dust.

### Rear panel:

- An ECA (fan placed behind a grille with filter);
- The computer hardware is powered up when the enclosure (fan) is switched on via a switch.

### Right side: Handling:

- Side access to thermal printer;
- Enclosure opening & closing:
- Side panel folds down, fitted on piano hinge and closed with two latches;
- Thermoformed cover with PVC strengthener to improve the strength of the panel:
  - Cover closes against drop-down flap fitted with lip seals;
  - Fitted with hinges and opening assisted by two gas springs.

### Front panel:

- Printer controls and labels accessed via the front panel using a 6 mm thick PMMA (transparent thermoplastic) fold-down flap;

- Advantages:**
- Shock resistant
  - Optimum physical and thermal protection
  - Suitable for thermal printers large format thermal printers

Soundproofed version available: SOUNDPROOFING TGC



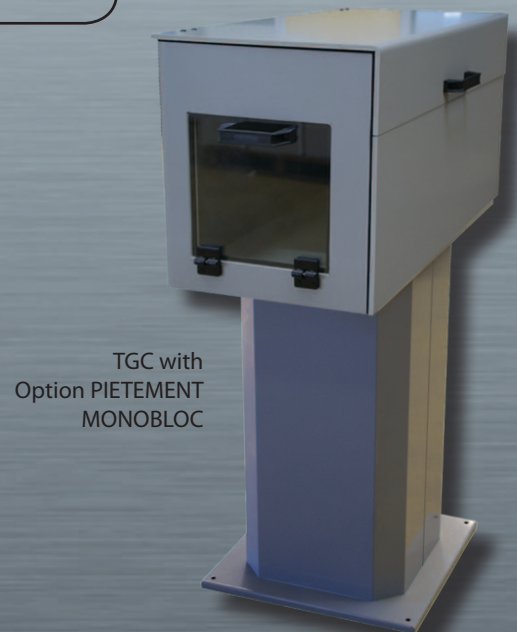
### TGC DIMENSIONS (mm):

Overall outer dimensions W 460 x D 760 x H 510 mm

Useful inner dimensions W 420 x D 700 x H 480 mm



Inner view of the TGC:  
Ventilation grilles on the side  
and ECA with switch on the rear



TGC with  
Option PIETEMENT  
MONOBLOC

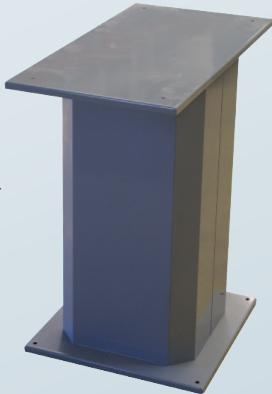


# Fixed and mobile workstations

## DESCRIPTION OF OPTIONS

The protection system  
for large format thermal printers

MONOBLOC  
STAND  
option



### MONOBLOC STAND option

- RAL 7035 grey painted steel stand. Available in two sizes:
  - Height: 680 mm;
  - Height: 960 mm.



### Option KDL:

- Specially designed cable gland system to feed cables without having to remove the connectors;
- The cable gland consists of two sections which hold the cables in place in the seals.



Slot  
LABEL SLOT +  
GUIDE



### LABEL SLOT options

- LABEL SLOT + GUIDE: Slot in the PMMA flap on the front with a guide for easy handling of labels;
- TAV: Inspection port in unbreakable polycarbonate Available in two sizes (mm):
  - TAV L 12: L 220 x H 100;
  - TAV L 24: L 220 x H 190.



Slot  
TAV model

PRESSURE REDUCER  
option



### PRESSURE REDUCER option

- The enclosure is connected to the dry air network via a pressure reducer to pressurise the enclosure and prevent the entry of any particles, dust, etc.